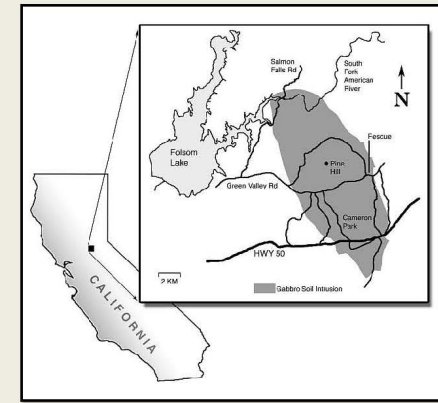




Northwest slope of Pine Hill

Rare Plant Treasure Hunt at Pine Hill El Dorado Chapter CNPS

Debra Ayres, Alice Cantelow-Lubekin, Lisa Couper,
Melanie Gogol-Prokurat, Lester Lubekin,
Sarah Powell, and Annie Walker
drayres@ucdavis.edu



Gabbro soil intrusion with Pine Hill in the center.

GOAL

Establish 70' fuel reduction perimeter around Pine Hill, land-locked by private property (collaboration between CDFW and CNPS).

El Dorado Chapter CNPS tasks Spring 2017:

- Conduct Rare Plant Treasure Hunt surveys to red flag rare plants to leave alone.
- Locate burn piles to avoid all federally listed species.



CDFW botanist, Melanie Gogol-Prokurat, flags her flannelbush find



Challenges of the chaparral
Chapter members Val Dowty and Shellie Perry



Chlorogalum grandiflorum (S. Tyron)



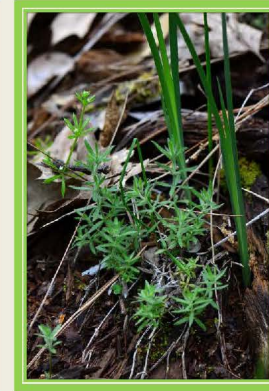
Packera layneae (T. Mikich)



Ceanothus roderickii (D. Ayres)



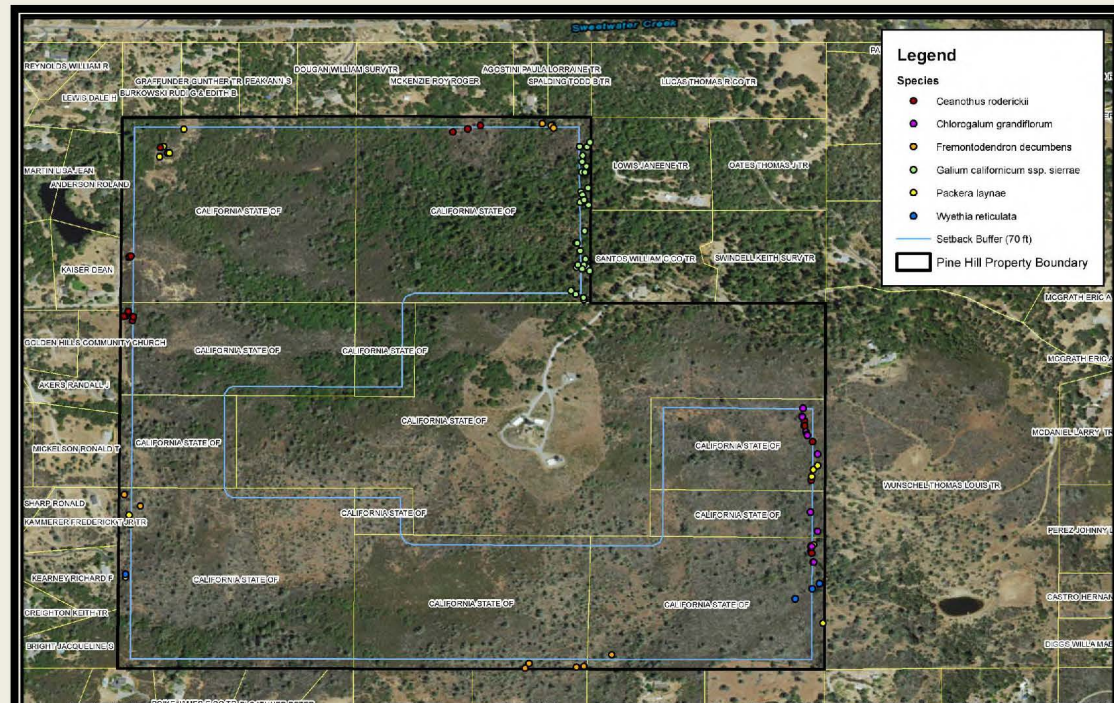
Fremontodendron decumbens (D. Ayres)



Galium calif. ssp. Sierra (T. Mikich)

Chapter and CDFW botanists mapped 70 unreported occurrences of six rare plants:

- Ceanothus roderickii* (Pine hill ceanothus)
- Chlorogalum grandiflorum* (Red hills soaproot)
- Fremontodendron decumbens* (Pine hill flannelbush)
- Galium californicum* ssp. Sierra (El dorado bedstraw)
- Packera layneae* (Pine hill ragwort)
- Wyethia reticulata* (El dorado mule ears)



Visit us at <https://www.eldoradocnps.org/>