



GOLD FIELD NOTES

EL DORADO CHAPTER ☼ CALIFORNIA NATIVE PLANT SOCIETY ☼ SEPTEMBER-OCTOBER 2019

SEPTEMBER 24 PROGRAM ECOLOGICAL ENTANGLEMENT – FAIRY MOTHS AND CALIFORNIA NATIVE PLANTS

Our subjects, Fairy Moths (Family Adelidae, Genus Adela), are day-flying micro-moths. Some are brassy, some are bronzy, some have lines and others spots, but all have long to super long antennae. The long antennae make them appear to float when they fly. Their life cycle is intimately entangled with an assortment of native plants. This talk by Lisa Couper and Al Ludtke will feature macro photos and a few short videos of the live moths and their specific native plant hosts. Included are 7 of the 8 species in California (plus an additional potential new species). Much of the photography in this presentation is from El Dorado County, by Lisa Cooper. Learn how to locate, enjoy and add to our knowledge about these enigmatic little moths as you venture out to explore native plants in Northern California.



Photo: Lisa Cooper

This program will be held on Tuesday, September 24, at 7 PM at the Planning Commission Room, Building C, 2850 Fairlane Court, Placerville. The program is free to both members and the public.



Photo: Lisa Cooper

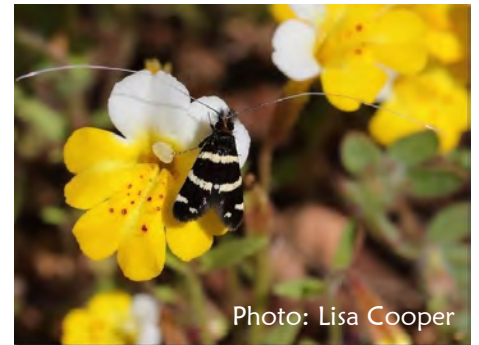


Photo: Lisa Cooper

ested in such an effort, let us know! Web.eldoradocnps@gmail.com Meanwhile, have you tried Calflora.org? The main menu has a new spot “What Grows Here?” on the left. You can enter a trail or location name, or even better, you can draw a polygon on their map. (We recommend that you make the polygon larger than the area you are wondering about, in order to get a more comprehensive list of plants- preferably

of course at roughly the same elevation.) Once you choose a location and push “search”, plants will come up by category. They even have several photos for almost every plant, which is very helpful. As a test, try it for Wright’s Lake. You’ll get lots of plants, depending on where on the zoomed in map you search!

Happy plant sleuthing on your next hike!

CALENDAR

September 24 (Tuesday)

Chapter program.
Fairy Moths and California Native Plants resented by with Alvin Ludtke and Lisa Cooper. Details to the right.

October 5 (Saturday)

Twice yearly plant sale.
See details inside.

November 19 (Tuesday)

Chapter program.
Alaska with Alice and Lester. More details in November newsletter.

Third Tuesday

Evening programs are held on the fourth Tuesday of January, March, May, July, September, and November. The program begins at 7 PM at the Planning Commission Room, Building C, 2850 Fairlane Court, Placerville.

ENHANCING YOUR WALKS: USING PLANT LISTS

We’ve received several requests lately about plant lists for specific areas or trails. You can find lists for a few popular areas on our website, under Plant Places, and then Plant Walks. From the map, you can pull up lists for El Dorado National Forest, Carson Pass, Kanaka Valley, Pine Hill, Leeks Spring Valley, and Traverse Creek. We are very thankful to our members who have generously shared these lists!

More lists do exist, or perhaps you’d like to create one to share yourself. Right now we have no one to compile plant lists, locate them on the map, and get them to our webmaster. If you are inter-

Native Plant Sale



Saturday - October 5, 2019

9 a.m. to 12 noon

2850 Fairlane Ct. • Bldg C • Placerville

Plants • Gardening Advice • Books

The warm days and cool nights of fall is the best time to get native plants into the ground. And the best place to purchase your plants is at our fall sale on Saturday, October 5th from 9:00 AM to Noon. Choose from a special selection of plants procured from the best native plant growers in northern California, some of them local to El Dorado County. In addition to choice plants, some of the best gardening and nature books, gorgeous posters and our very own chapter t-shirts will be available for purchase. Get advice on choosing plants for specific microclimates, to attract pollinators, replace lawns, for firescapes, and more. Experienced native-plant gardeners will be available throughout the sale to help you choose the right

plants for your garden and answer your questions.

See the insert list of plants likely to be at the sale, and plan ahead for your shopping trip.

CASH, CHECKS, AND CREDIT CARDS ACCEPTED, and all sales are final. Arrive early for best selection.

**LOCATION: COUNTY BUILDING C'S
MIDDLE PARKING LOT**

The sale will be held at the El Dorado County Government Center, middle parking lot in front of Building C, 2850 Fairlane Court, Placerville.

YOUR HELP NEEDED AT PLANT SALE ON OCTOBER 5

Thank you for your continued support of our Native Plant Sale both in your purchases and your time. This sale will feature the chapter's NEW Native Landscape Planting Guide with garden projects. Also at sale will be gardening advice, weed identification (bringing sample in baggie is best), books, and more. Oh yeah, and plants to purchase.

We need help setting up Saturday morning and assisting throughout the day. We are

especially in need of someone able to move tables, pop-up shade structures, and boxed supplies from Cindy's garage in Placerville to the sale location at the County Government Bldg. C (below the library). Renting a U-Haul is how we have done this in the past. If you are interested in helping out in any capacity at the plant sale, please contact Tal Blackburn, nblackburn@zetabroadband.com or 530-417-6885.



CNPS-EDC will pay for U-Haul

MEADOW RESTORATION ON THE ELDORADO NATIONAL FOREST

The Schedule of Proposed Actions (SOPA) is published quarterly by the Eldorado National Forest. Some interesting things are happening this quarter, among them a couple of meadow restoration projects in which they take action toward lodgepole encroachment. Lodgepole (*Pinus contorta* v. *murrayana*) do tend to move into higher elevation meadows, which means less water for meadow plants, and eventually you see dry areas.

Project One. The Frances Cow Camp Habitat Restoration is located on the north end of Forest, and in the vicinity of Gerle Creek Campground on Pacific Ranger District. The Forest Service intends to improve wetland habitat and restore the

wetland function of the Francis Cow Camp area. The wetland has been diminished due to past activities including OHV use, logging, & ranching. Actions include lodgepole felling, in-channel work and prescribed burns. For more information check out: http://www.fs.fed.us/nepa/nepa_project_exp.php?project=55802

Project Two. Wilson Meadow and Calf Pasture Restoration. This is done under a 'CE', which means Categorical Exclusion. Those types of projects don't need much of an environmental examination, they don't need NEPA work. So they can be accomplished faster. The project will improve hydrologic function within two meadows which have been highly manipulated by past logging, ranching, and channel diversions. In-channel work could include 'plug & pond,' gully fill, and meadow surface reshaping techniques. For more details: http://www.fs.fed.us/nepa/nepa_project_exp.php?project=55803

Part of this project is at Wilson Meadow where we had a field trip in August led by Rich Wade. The other meadow mentioned, Calf Pasture is a little harder to find. Walk a dirt road from the Tells Equestrian Camp. If people are interested in visiting, we can get a group together to go see it. This too is on Pacific Ranger District.

The last time I saw Calf Pasture it was terribly dry, with upland species (annuals) moving in; as well as lodgepole encroachment. There was disturbed ground, and deformation of the stream alignment. The plug 'n pond method involves a lot of ground disturbance and looks nice for awhile, but the ponds fill in, not sure if that is the intent or not. Perhaps we can learn more about the effectiveness of plug 'n pond. The Indian Valley work could be revisited to learn more about that.

*Annie Walker
Chapter member*

CHAPTER VOLUNTEERS ASSIST WITH PINE HILL FIRE ECOLOGY STUDY

In 2017, our Chapter volunteers surveyed the perimeter of Pine Hill to flag individuals of rare species in preparation for hand clearing and pile burning of a 70-foot fire-safe belt. Since then, Calfire crews completed the cutting and burning of shrubs. This has given us the opportunity to study the effects of clearing versus burning on seedling establishment and survival of Pine Hill rare species, as well as on the colonization by exotic species in the gabbro chaparral community. In past fire ecology research, it has been difficult to use true replication since multiple plots are typically placed within one large burned area. In the Pine Hill case, however, because piles of brush were burned individually, it is possible to place study plots in separate burns, thus providing

true replication.

This past spring, Drs. Deb Ayres and Ginna Meyer led Chapter volunteers and Sacramento City College Field Ecology students to begin the project by establishing paired plots on the western slope of the hill, in cleared and pile-burned portions of the perimeter to count and mark seedlings of Pine Hill ceanothus (*Ceanothus roderickii*), and to record cover of all species, including exotics. This will enable us to compare the Pine Hill ceanothus seedling survival rate in areas that were only cleared with that in areas that were cleared and burned. In addition, we'll be able to compare colonization and cover of non-native species in cleared versus burned areas. This fall, we will return to the same plots to count seedlings, and next spring, to again count seedlings and assess cover of all species. In addition, we will establish plots on the remaining hill aspects, to study clearing and burning ef-

NATIVE PLANTING GUIDE FOR EL DORADO COUNTY

Several CNPS Chapters have developed Native Planting Guides for their areas. These regional guides take the guesswork out of which plants to use where, and give you the tools you need to get started with your landscape project. The brochures, formatted and designed by State CNPS, have a list of 45 plants selected by the local CNPS Chapter experts, each

plant detailed as to size, culture, and habitat value to winged wildlife. Five landscape vignettes with design templates show which plants go where.

A special committee, chaired by VP Deb Ayres, has developed a list of favorite native plants for our county. Plants were initially selected by searching Calscape (<https://calscape.org/>) for local native plants that are easy to grow and readily available at nurseries. Committee members scored each of the selections, and

NOVEMBER 19 PROGRAM ALASKA WITH ALICE AND LESTER

Third Tuesday

This program will be held on Tuesday, November 19 at 7 PM at the Planning Commission Room, Building C, 2850 Fairlane Court, Placerville. The program is free to both members and the public.

ffects on seedling establishment of Pine Hill flannelbush (*Fremontodendron decumbens*) and El Dorado bedstraw (*Galium californicum* ssp. *sierra*) and on colonization of exotic species.

Would you like to join this project? Contact our volunteer coordinator, Tal Blackburn, at nblackburn@zetabroadband.com and either Deb Ayres at drayres@ucdavis.edu or Ginna Meyer at vcmeyer@mac.com.

added other plants not locally native that should be on our list like cultivars of Manzanita and Ceanothus – the difficulty was in winnowing down the plants! Favorite plants range from woody trees and shrubs like Blue Oak, redbud, sages, toyon, and coffeeberry to flowering perennials like penstamon, Buckwheats, and Milkweeds, and native grasses like deergrass and California fescue. All of these plants and our new planting guide will be available Oct. 5 at our fall plant sale.

CAPLES CREEK PROJECT: DONE FOR THIS YEAR- THANK YOU TO ALL!

Thank you to the over 60 volunteers that protected the large Ponderosa pines within the Caples Creek Ecological Restoration area! We treated an area nearly 100 acres in size, removing ladder fuels and raking the area around 200 trees. Your hard work and efforts will help these magnificent trees thrive following the planned prescribed understory burn scheduled for this Fall. Volunteers ranged in age from 6 to 85, and every single one's hard work is appreciated!

A special thanks to chapter members: Kathleen Barco, Bill Blackburn, Tal Blackburn, Alice Cantelow, Janet Cicero, Lisa Cooper, Caitlin Davis, Becky Estes, Lester Lubetkin, Marty Oberlander, Jan Okamura Karen Schambach, Ben Solvesky, Gwen Starrett, Craig Thomas, Bonnie Turnbull, Annie Walker, and Howard Williams. (and any others we may have forgotten!)



The project will continue next year across the creek, so stay tuned!

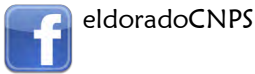


El Dorado Chapter
California Native Plant Society
P.O. Box 1948
Placerville, CA 95667

September-October 2019



For Updates Visit Us on the Web
www.eldoradoCNPS.org and



CALIFORNIA
NATIVE PLANT SOCIETY

**DEDICATED TO THE
PRESERVATION OF
CALIFORNIA'S NATIVE FLORA**

The California Native Plant Society is a statewide nonprofit organization of amateurs and professionals with a common interest in California's native plants. The mission of the Society is to conserve California native plants and their natural habitats, and increase understanding, appreciation, and horticultural use of native plants. Membership is open to all.

Membership includes the journal *Fremon-tia*, quarterly magazine, *Flora*, which gives statewide news and announcements of Society activities and conservation issues, and the chapter newsletter *Gold Field Notes*. To join, call our main office in Sacramento, (916) 447-2677, or visit www.cnps.org to join online.

CHAPTER OFFICERS AND COMMITTEE CHAIRS

Contact Chapter Leadership at web.eldoradocnps@gmail.com

PRESIDENT	Alice Cantelow
VICE PRESIDENT	Debra Ayres
SECRETARY	Kathleen Barco
TREASURER	Ola Jane Gow
BOOKS & POSTERS	Vacant
CONSERVATION CO-CHAIRS	Lester Lubetkin Sue Britting
CLARK YOUTH FUND	Chelsea Morgan
FIELD TRIPS	Ginna Meyer
INVASIVE EXOTICS	Annie Walker, temporary
LIBRARY DEMO GARDEN CO-CHAIRS	Cindy Podsiadlo Madeline Franke
MEMBERSHIP	Vacant
PLANT SALE CHAIR	Christie Johnson
PROGRAMS	Debra Ayres
RARE PLANTS	Annie Walker
VOLUNTEER COORDINATOR	Tal Blackburn
Facebook	Annie Walker
Instagram	Kathleen Barco
WEBMASTER	Deborah Nicolls
NEWSLETTER	Sue Britting