



# GOLD FIELD NOTES

EL DORADO CHAPTER ☼ CALIFORNIA NATIVE PLANT SOCIETY ☼ MARCH-APRIL 2022

## MARCH 22 PROGRAM SUPPORTING GARDEN ALLIES - GARDENING FOR POLLINATORS AND BENEFICIAL INSECTS

Kit Veerkamp will present to the El Dorado Chapter of CNPS on the insects in our gardens: how they can become our allies and how we can support them by maintaining a natural balance. These days most of us are aware that bees and butterflies are in trouble. Many of us wish to avoid using pesticides but are stymied about how to deal with pesky insects eating our plants.

She will discuss:

- The four types of beneficial insects: decomposers, pollinators, predators, and parasitoid, and how each benefits your garden
- How the plants you select can encourage and support garden allies
- Ways to make room for ground-dwelling beneficials and pollinators.

The presentation begins at 7 p.m. and will be given via Zoom and is free and open to all. Advance registration is required. Visit this link to register: <https://tinyurl.com/EDC-CNPS-Mar-Gen-Meet>



Orb-weaver — a terrific companion for pest control in your garden. Photo: Kit Veerkamp.

### CALENDAR

#### March 19 (Saturday)

Event.  
Get Prepared for Wildfire Season, 10 am to 3 pm in Placerville. See flyer below.

#### March 22 (Tuesday)

Chapter program.  
Supporting Garden Allies - Gardening for Pollinators and Beneficial Insects with Kit Veerkamp. Zoom meeting beginning at 7 p.m.. Details to the right.

#### March 19 to April 2 (online) & 9 (pick-up)

Twice yearly plant sale.  
Online sale with in-person pick-up in Placerville. See inside for details.

#### May 24 (Tuesday)

Chapter program.  
Ginna Meyer on her favorite CNPS hikes. Details in the next newsletter.

- Fire Safe Council
- Home Defense
- Home Hardening
- Tree Removal
- Native Plants Choices
- Insurance
- Chipping
- Fire Quadrants
- Firewise Community
- EDC Fire Protection District
- Amateur Radio Club

ALL AGES  
WELCOME

Saturday  
**MARCH 19**  
10AM - 3PM

Placerville Town Hall  
549 Main Street  
Placerville

presented by The Placerville Fire Safe Council & The City of Placerville



get prepared for  
**WILDFIRE  
SEASON**

PFSC is a community-based organization made up of volunteers whose mission is to mitigate the loss of life, property, and natural resources in the Placerville area due to wildfire.

# TAKING UP THE CARBON NEUTRAL PLEDGE

By being members of CNPS, we are champions for native plants in our community – not just plants, but pollinators, birds, and other wild creatures that thrive among the plants in the forests, woodlands, chaparral, and in our own backyards. Even as we enjoy and conserve nature, our activities release carbon dioxide and other greenhouse gases into the atmosphere.

Carbon credit purchase of April 2021 to March 2022 fiscal/activity year as documented at the chapter board meeting in January:

From Lester- He calculated that the carbon sequestered directly as a result of our work at Caples protecting old growth trees within the prescribed burn area was approximately 6 tons yearly. This is based on annual growth of these large trees. Should this be seen as helping offset part of our chapter's carbon footprint?

From Alice- Yes, we should look at our costs and our benefits. As a chapter some of what we are doing is indeed reducing our carbon footprint, as Lester calculated, and should not be ignored.

Further discussion: Six-ton credit versus 7-ton emissions would give a net footprint of 1 ton of carbon for chapter activities. Good example to show people we are doing everything we can to sequester. Alice moved, it was seconded and approved by all, that we recognize our 6-ton contribution for last year and also spend \$150 of carbon credits.

(Excerpted from EDC Board Minutes, 1/18/2022)

Ola Jane has since donated \$150 to Native Energy on behalf of the El Dorado Chapter CNPS and will also put \$150 into next year's budget. Our donation this year supports the Medford Spring Grassland Project in Colorado. See <https://native.eco/project/medford-spring-grassland-conservation/> for a description.

Respectfully,  
Tal Blackburn

*"You never change things by fighting the existing reality. To change something, build a new model that makes the existing model obsolete." -Richard Buckminster Fuller*



Carbon offset funds from our chapter are helping the Southern Plains Land Trust conserve the 6,900 acres of short grass prairie. Photo: Native, a Public Benefit Corporation.

---

## UPCOMING VOLUNTEER OPPORTUNITIES - JOIN IN FOR NATIVE PLANTS!

### Spring plant sale driver(s)

We need a driver for the April plant sale. Each Spring and Fall, we bring plants from Floral Natives Nursery in Chico down to Placerville, saving many trips for others. Floral Natives is the specialty native nursery closest to our situation (east side of Sac Valley) and they have a wonderful variety of plants.

For the last several sales, Lester and Alice have done the job, but they are only willing to commit to this once a year now for the Fall sales. Would you like to do this for Spring sales, so those sales can continue? You can accompany Alice and Lester for this last Spring drive of theirs Friday April 8, and learn the ropes. **The chapter pays for a UHaul rental, so you don't need a truck yourself.** You do need to be comfortable driving a UHaul to Chico and back, and loading it full of plants. It can be a nice way to visit the Floral Natives nursery though, includ-

ing their retail area, where you can visit lots of plants for sale in person!

Interested? Let us know! [web.eldoradocnps@gmail.com](mailto:web.eldoradocnps@gmail.com)

### Plant Sale pickup day- April 9

Want to help sort or hand out plants to buyers? We have morning and afternoon shifts available for the chapter plant sale Sat April 9. Its a fun day, and a great way to meet fellow chapter members as you share the love of native plants with appreciative buyers. Join us! Contact Alice Cantelow at

### April at the library for native plants

Cindy Podsiadlo, display creator extraordinaire, has reserved the display cases at the main Placerville library for the chapter to create native plant displays. Feeling creative and want to help with this fun activity? Contact Cindy Podsiadlo ([clpodsiadlo@yahoo.com](mailto:clpodsiadlo@yahoo.com))

# WEEDS – PAST, PRESENT, AND FUTURE

There are a few principles of weed control to remember; the main concept for **annual plants is “seed control”**. **First, limit disturbance of the soil** when you kill weeds as weed seeds buried in the soil are brought up by pulling or hoeing. Herbicides disturb soil the least; scuffle hoes and knives are good manual control techniques to limit disturbing the soil. Second, weeds should be killed before they set seeds; a single year of seed production can undo all of the good work of the previous years. Herbicides are generally best used on young plants before leaves become tough or sticky. Mowing can be effective later in the year when timed to weed growth.

These principles of weed control are less important when the plant is perennial; that is, the weed comes back year after year from woody or below ground stems. This year the Chapter weed warriors (WWs) noticed several 3’ tall dead

plants with yellow cherry-tomato-like berries clinging to the shriveled branches along Durock Road near a popular fishing pond. Over the previous 10 years this plant occurred on both sides of the road and was subject to control by the County but had escaped control efforts during the pandemic. It turned out to be horse nettle (*Solanum carolinense*), one of the deadly nightshades causing a range of symptoms including death; all parts are poisonous but the fruit is especially deadly. The WWs turned out, along with County weed techs, and the plants were cut down, bagged, and disposed of by the County in their special dumpster. It will resprout this spring and the County will be there to dose it with herbicides.

Yellow star thistle (YST) and Italian thistle (IT) were up early last month and the WWs went after them at the Pine Hill Preserves. At one site, where we spent 40 person-hours last year cutting out 1000s of IT, we found only FIVE IT seedlings! **At another site, after “completely” weeding last year, we found 5 IT plants had flowered and re-seeded a (smaller) popu-**

lation, requiring another bout of weeding. Similarly, at a third site, YST and IT plants had escaped our weeding, flowered, and recruited a lot of seedlings. A WW team will attack these weeds soon. Due to seeds in the soil, and new seed production, repeat visits are needed to eradicate a weed patch.

Finally, we will keep our eyes peeled for **the emergence of this year’s crop of stinkwort**, due up next month. Targeted sites will be the Pine Hill Preserves and our own neighborhoods. Several of us have adopted stretches of roadside in our **‘hoods and both educate our neighbors**, and weed it out ourselves. If your neighbors agree, a spritz of Roundup takes out the small plants. Control is especially needed where WE pay to maintain our roads as this plant can grow in roadside cracks and enlarge them, requiring repair. Inspect the ground beneath the skeletons from last year, where a lot of seedlings will be found, to time your efforts.

*Deb Ayres  
Invasive Plant, Co-Chair*



Upper left: Yellow star thistle (YST) seedling (Feb. 2022); Upper right: Stinkwort seedlings appearing under last year’s skeleton (April 8, 2021); Lower left: Horse nettle showing yellow berries (Feb. 2022); Lower right: Italian thistle (IT) (Feb. 2022); Photos: Deb Ayres.



# SPRING PLANT WALKS

## March 16 (Wednesday), Nimbus Dam Overlook and Vernal Pools

10 am - approximately 3 pm

**WHERE:** We'll visit the Nimbus Dam Overlook of the Folsom Lake State Recreation Area, then travel north to visit the pools at Phoenix Park and also have our picnic lunch, and then travel south to visit the pools at Mather Regional Park.

**WHEN:** March 16, 2022. To carpool: Meet at 9:30 am, Shingle Springs Park and Ride, at Hwy 50/Ponderosa Rd. Return: approximately 3:30 pm. If you need to return early, please let the leaders know. Alternatively, meet us at the Nimbus Overlook parking lot at 10 am.

**BRING:** A knapsack with your lunch or snack, water bottle; wear suitable hiking boots or shoes; sunscreen and insect repellent.

**WHAT TO SEE:** At Nimbus Overlook, in addition to two small vernal pools, you'll see oak woodland and a lovely canyon with wildflowers including canyon live-forever and Dutchman's pipevine. On this trip, you will also see several different sites with eastern Sacramento County terrace vernal pools. These are hardpan vernal pools that bloom in the spring with rings of wildflowers, including several species of goldfields and popcorn flowers, meadowfoam, checker-bloom, vernal pool monkeyflower, downingias, and Sacramento beard-style, and are surrounded by upland grassland habitat with many more wildflowers. In addition, the pools have unique critters, some of which are only found in vernal pools. **Note:** Because of the lack of January and February rains, warm temps, and anticipating a dry end of winter and beginning of spring, we're expecting that wildflowers will be blooming earlier than is "normal" and that the vernal pools will be "drying out" earlier also. Therefore, a trip usually taken in April has been scheduled in mid-March. At the time of this announcement, it is unknown exactly what we'll see on March 16.

**TO SIGN UP:** email our Field Trip Coordinator, Ginna Meyer, at [vcmeyer@mac.com](mailto:vcmeyer@mac.com)



Vernal pool at Nimbus Overlook. Photo: Ginna Meyer.

## March 25 (Friday), Deer Creek Hills Preserve

10:00 am - approximately 3:00 pm.

**WHERE:** Deer Creek Hills is a preserve of the Sacramento Valley Conservancy and located on Latrobe Road in Sloughouse, in eastern Sacramento County. For more on the preserve, see the Conservancy's website: <https://sacramentovalleyconservancy.org/deer-creek-hills-preserve/>

**WHEN:** March 25, 2022. To carpool from El Dorado County: Meet at 9:30 am, Shingle Springs Park and Ride, at Hwy 50/Ponderosa Rd. Return: approximately 3:30 pm.

**BRING:** A knapsack with your lunch or snack, water bottle; wear suitable hiking boots or shoes; sunscreen and insect repellent.

**WHAT TO SEE:** From the Conservancy's Deer Creek Hills Preserve website: "It is one of the largest nature preserves in the Sacramento region and is a working cattle ranch, boasting over 4,500 acres of Blue Oak Woodlands, seasonal creeks and grasslands." Expect to see a variety of wildflowers, shrubs and trees that are associated with valley and lower foothill grasslands and woodlands including such beauties as frying pan poppy and whiskerbrush.

**TO SIGN UP:** email our Field Trip Coordinator, Ginna Meyer, at [vcmeyer@mac.com](mailto:vcmeyer@mac.com)



Collection of spring flowers at Deer Creek Preserve.  
Photo: Lisa Couper.

## SPRING PLANT SALE: ORDER ONLINE MARCH 19 TO APRIL 2. PICK-UP APRIL 9

Our online plant sales have been very popular, so we will continue to hold them online to offer a far greater variety than we could do otherwise. We may have vendors offering plants for sale on site at the time of pick-up, but offerings will be limited. Online ordering will start at 9 am Saturday, March 19 up until 3 pm on Saturday, April 2nd. Pick up will be scheduled for Saturday, April 9th between noon and 3 pm at the same place as always, Building C at the El Dorado County Government Center on Fairlane Court. Stay tuned for more details on our chapter webpage or the Homegrown Habitat: Native Plant Gardening in El Dorado County page on Facebook.

## MAY 24 PROGRAM: FAVORITE CNPS HIKES

Our general meeting on May 24th will feature our own Ginna Meyer who will present a pictorial tour of her favorite CNPS hikes. Details in the next newsletter.

## 2022 SPRING PINE HILL PRESERVE TOURS

Beginning in April, the Pine Hill Preserve, in coordination with the El Dorado Chapter of the California Native Plant Society, will offer a guided bird tour and three guided plant tours in different areas of the Preserve. The tours are free and open to the public. There is a limit of 20 participants per tour. Led by volunteer naturalists, each plant tour will focus primarily on the plants growing within the chaparral and oak woodland ecosystems of the Pine Hill Preserve, but will also include information about wildlife, pollinators, and geology.

**WHEN:** With exception of the bird tour, the following tours will begin at **9:00 AM and conclude by 1:00 PM**. The bird tour will begin at **7:00 AM and concludes at noon**.

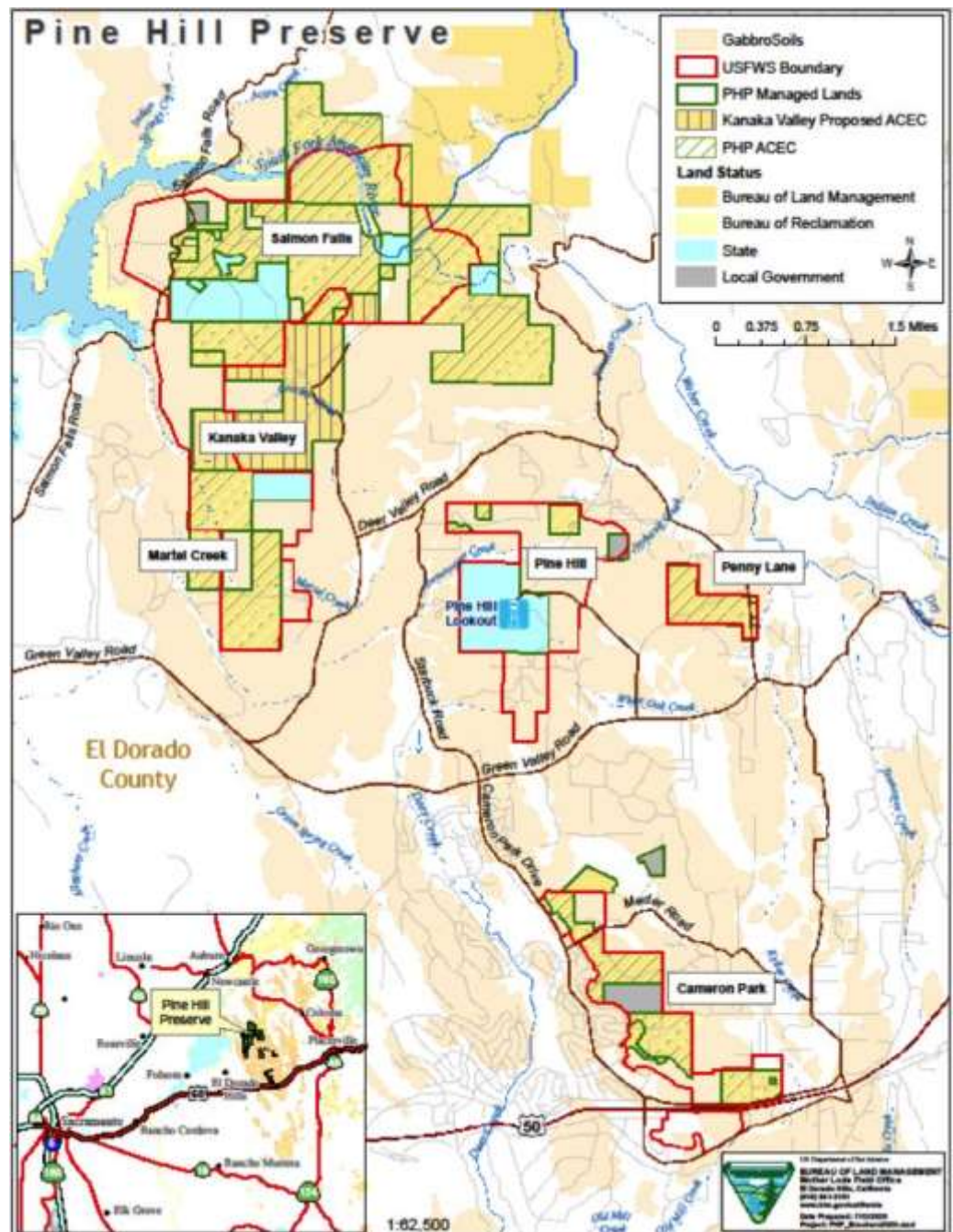
Sunday, April 10 - Kanaka Valley Bird Hike with Chris Conard – CNPS/PHP  
Sunday, April 17 - Kanaka Valley Plant Hike - CNPS/PHP  
Saturday, April 23 - Cameron Park Unit - CNPS/PHP  
Sunday, May 1 - Pine Hill Ecological Reserve - CNPS/PHP

**WHERE:** Tour locations are indicated above. Field trip participants will meet at designated areas and carpool to the site. Virginia Meyer, with the CNPS El Dorado Chapter, will notify bird and plant tour participants one week in advance regarding the meeting location for the tours.

**WHAT TO WEAR AND BRING:** Sturdy shoes, hat, water, a lunch or snacks, sun-screen, and insect repellent.

**HOW TO REGISTER:** For the bird and plant tours, contact Virginia Meyer, CNPS Volunteer by email: [vmeyer@mac.com](mailto:vmeyer@mac.com). Secondary contact Graciela Hinshaw, BLM-Pine Hill Preserve by

email: [pinehillpreserve@gmail.com](mailto:pinehillpreserve@gmail.com) or [ghinshaw@blm.gov](mailto:ghinshaw@blm.gov)





El Dorado Chapter  
 California Native Plant Society  
 P.O. Box 1948  
 Placerville, CA 95667

March-April 2022



For Updates Visit Us on the Web  
[www.eldoradoCNPS.org](http://www.eldoradoCNPS.org) and



CALIFORNIA  
 NATIVE PLANT SOCIETY

DEDICATED TO THE  
 PRESERVATION OF  
 CALIFORNIA'S NATIVE FLORA

The California Native Plant Society is a statewide nonprofit organization of amateurs and professionals with a common interest in California's native plants. The mission of the Society is to conserve California native plants and their natural habitats, and increase understanding, appreciation, and horticultural use of native plants. Membership is open to all.

Membership includes the journal *Artemisia*, quarterly magazine, *Flora*, which gives statewide news and announcements of Society activities and conservation issues, and the chapter newsletter *Gold Field Notes*. To join, call our main office in Sacramento, (916) 447-2677, or visit [www.cnps.org](http://www.cnps.org) to join online.

### CHAPTER OFFICERS AND COMMITTEE CHAIRS

Contact Chapter Leadership at [web.eldoradocnps@gmail.com](mailto:web.eldoradocnps@gmail.com)

PRESIDENT  
 VICE PRESIDENT  
 SECRETARY  
 TREASURER  
 BOOKS & POSTERS  
 CONSERVATION CO-CHAIRS  
  
 CLARK YOUTH FUND  
 FIELD TRIPS  
 INVASIVE EXOTICS CO-CHAIRS  
  
 LIBRARY DEMO GARDEN CO-CHAIRS  
  
 MEMBERSHIP  
 PLANT SALE CHAIR  
 PROGRAMS  
 RARE PLANTS  
 VOLUNTEER COORDINATOR  
 FACEBOOK  
 COMMUNICATIONS  
 WEBMASTER  
 NEWSLETTER

Alice Cantelow  
 Debra Ayres  
 Kathleen Barco  
 Ola Jane Gow  
 Christie Johnson  
 Lester Lubetkin  
 Sue Britting  
 Chelsea Morgan  
 Ginna Meyer  
 Debra Ayres  
 Virginia Meyer  
 Cindy Podsiadlo  
 Madeline Franke  
 Cindy Podsiadlo  
 Kit Veerkamp  
 Debra Ayres  
 Steve Serkanic  
 Vacant  
 Annie Walker  
 Kathleen Barco  
 Deborah Nicolls  
 Sue Britting