

Rosaceae in El Dorado County

92 Kinds (species and subspecies)

10 Trees

45 Shrubs

47 Herbs

2 Annuals

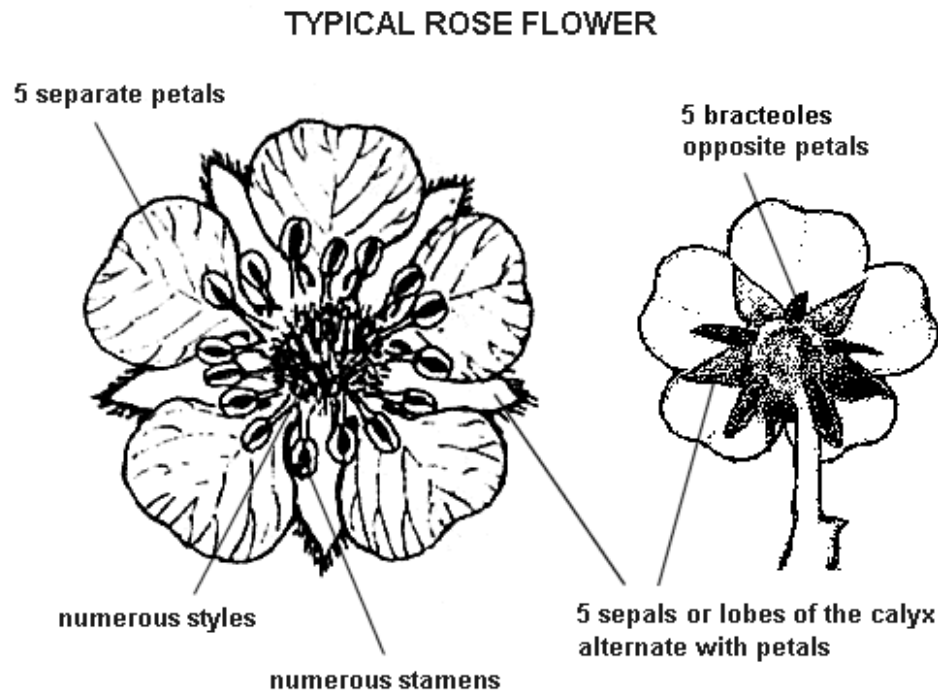
Prunus andersonii

Photo: Tripp Mikich



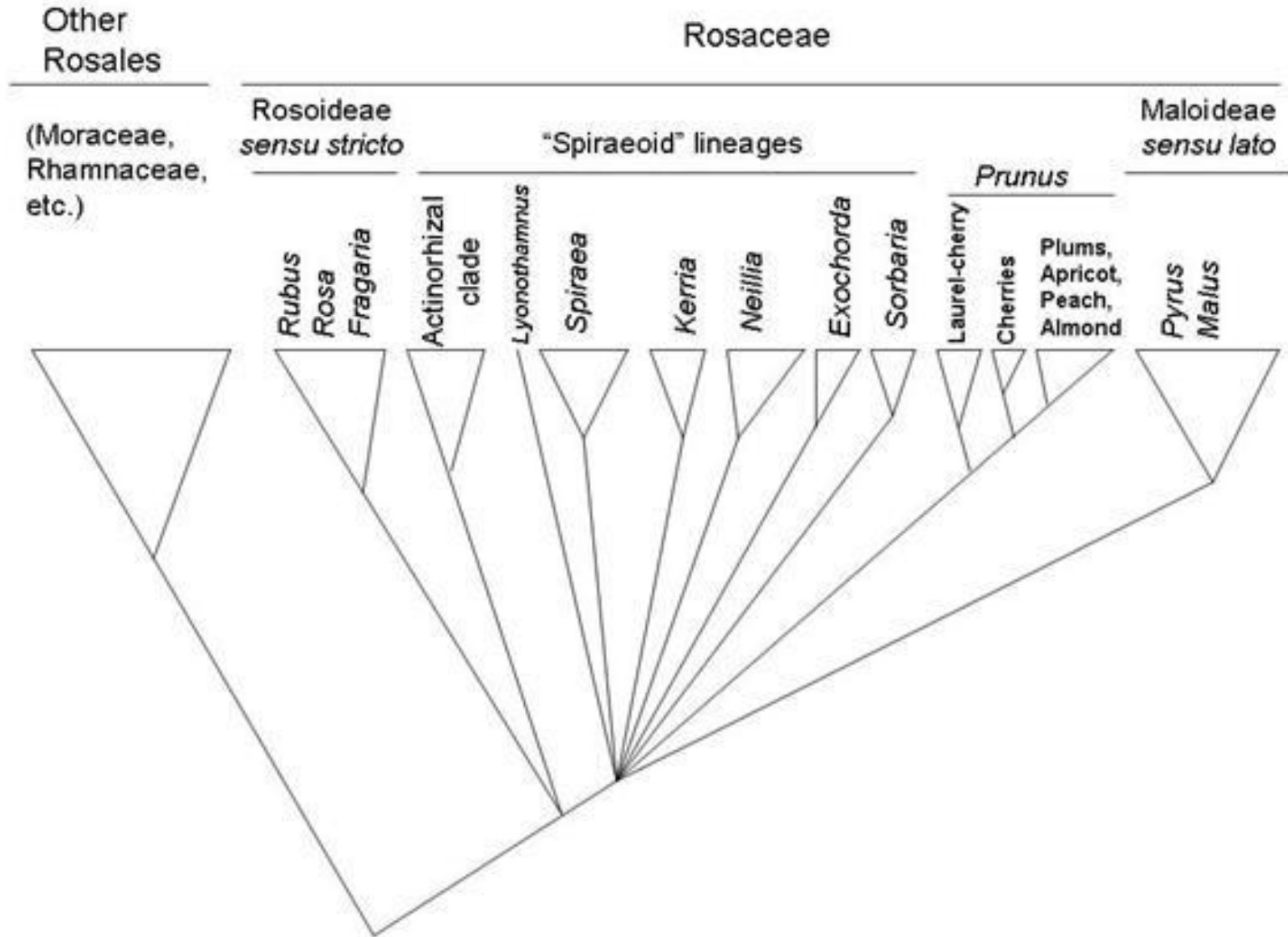
Several economically important products come from the **Rosaceae**, including many edible fruits (such as apples, pears, quinces, apricots, plums, cherries, peaches, raspberries, loquats, and strawberries), almonds, and ornamental trees and shrubs (such as roses, meadowsweets, photinias, firethorns, rowans, and hawthorns).

Characteristics of the Rose Family



*K5 C5 A5to++ G (5) or ++, inferior or superior
Wide variety of fruit types – extra-ovary

Complex Phylogeny – 4 main subfamilies



Characteristics of the Rose Family

The Four Subfamilies of Rosaceae

Subfamily	Carpels	Ovary	Fruit	Chromosomes
Spiraeoideae	few (5); free	superior	follicles	9
Rosoideae	many	superior	achenes or druplets	7 (9)
Amygdaloideae	one (to 5)	superior	drupe	8
Maloideae	2-5	inferior	pome	17

Trees – 10 species

Sorbus sitchensis Western Mt.
Ash



955757 © Mark Turner
www.turnerphotographics.com

Fruit is a
pome



Cercocarpus betuloides
Mountain Mahogany
4 species



Fruit is a
tailed achene



Trees – 10 species

Prunus virginiana Chokecherry *Prunus subcordata* Sierra Plum

6 species of native Prunus



Fleshy fruit is called a drupe



Shrubs – 10 Native Rose Species



5 Petals

Generally Pink

Thorny stems

Pinnate lvs

Fruit is a Hip

- Achenes inside
accessory tissue

Shrubs 45 Species

Chaparral Species

Adenostoma fasciculatum

Chamise



Fruit is an
achene

Heteromeles arbutifolia

Toyon

“CA Holly”
Holly of
Hollywood



Fruit is a
pome



Shrubs 45 Species

Oemleria cerasiformis Osoberry or Indian Plum

Only species in the genus

Dioecious – male and female trees

Fruit is a drupe



WA NPS



Shrubs – low growing, vining

Chamaebatia foliolosa
Mountain Misery



Photo by Becky Howard

Rubus parviflorus
Thimbleberry (4 species)



Fruit is an
achene



Aggregate of
drupelets

Herbs – 47 species

Fragaria vesca Wild Strawberry



Many ovaries give rise to achenes (“pips”) that are born on an extra-ovary fleshy receptacle



Herbs – 47 species

Cinquefoils – AKA “barren strawberry”

Potentilla and formerly *Potentilla* (12 sp) now *Drymocallis* (9 sp)

Drymocallis



Potentilla



Flowers can be white but more commonly yellow. Fruit is a nut – dry fruit like an achene but with an additional hard shell

Herbs – *Ivesia* and *Horkelia*

Photos: Steven and Shellie Perry

Ivesia “mousetail”



Horkelia

