

Ericaceae

Heath Family

Heath Family in El Dorado County

- 43 species in the Ericaceae
- 16 genera distributed into...
- 8 subfamilies
- 14 species of *Arctostaphylos* (manzanita)
- Most all occur on acid soils
- Perennials, shrubs, trees (Madrone)
- There are no non-native heaths

- Varying flowers, fruits, etc.

Varying flowers.....



Ericaceae (2002)

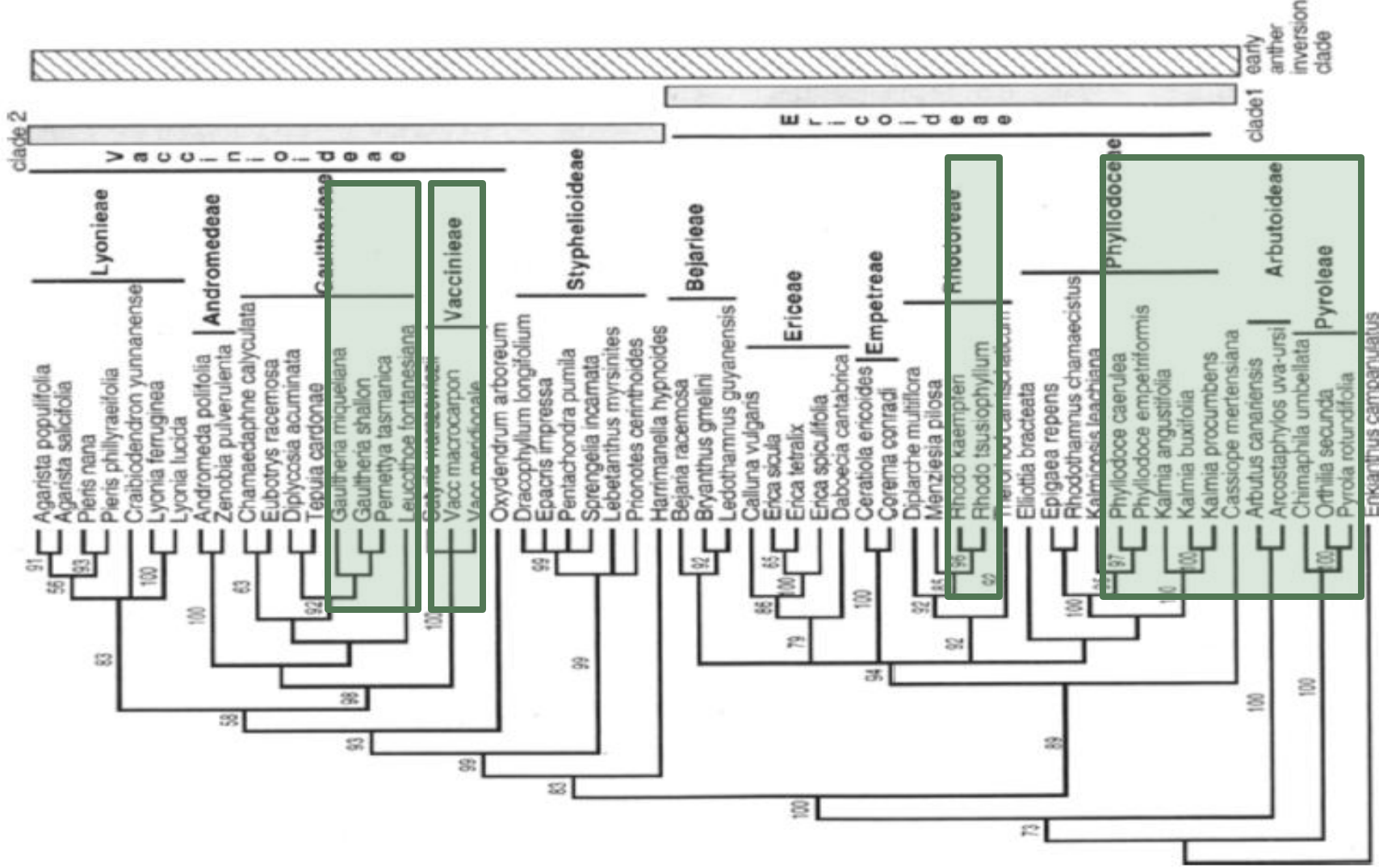


Fig. 7. Strict consensus of 96 trees found in the combined analysis of morphology, *matK*, and *rbcl* data for 59 taxa of Ericaceae. L = 3562, CI = 0.41, RI = 0.62, uninformative characters removed, gaps scored as missing data, bootstrap values above lines. Rhodo = *Rhododendron*; Therorhod = *Therorhodon*.

Arctostaphylos (14) & *Arbutus* (1)



Chimaphilla (2), *Pyrola* (8) & *Orthilla* (1)



Vaccinium (5)



Non-green (1 each)

Allotropa, *Pleuricospora*, *Pterospora* & *Sarcodes*



Gaultheria (2) & *Leucothoe* (1)



Phyllodoce (1) & *Kalmia* (1)



Rhododendron (2)

